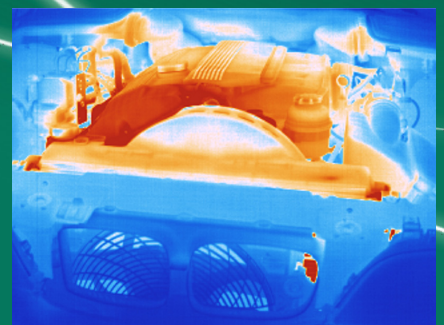
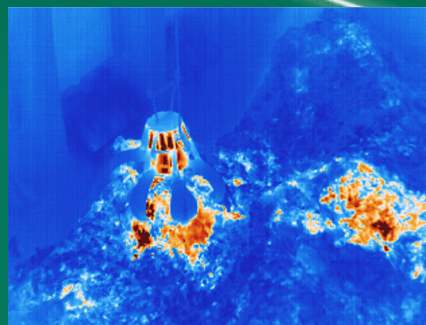
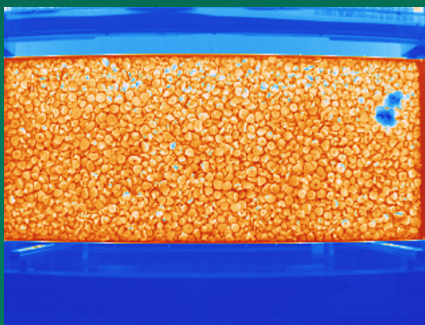


Fixed Infrared Cameras **PYROVIEW**

Non-contact Measurement of Temperature Distributions

-20 °C to 3000 °C





PYROVIEW

The world's most manifold fixed infrared

Our infrared camera series **PYROVIEW** allows you non-contact measurement of two-dimensional temperature distributions with high thermal and spatial resolution. All models are specifically designed for longterm use in fixed-mount applications.

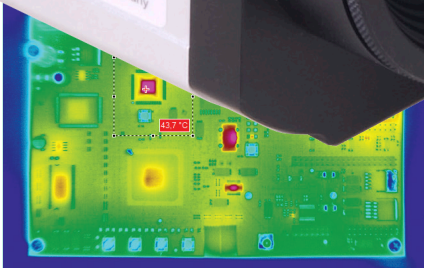
Different standard, wide angle, tele and macro lenses as well as special combustion chamber lenses and borescope lenses with motor focussing allow best possible measurement results. With real-time data acquisition via Fast Ethernet or Gigabit Ethernet images can be transferred to a computer. Stand-alone operation without computer is possible as well - depending on the model.

Alarm and threshold monitoring as well as triggered measurements are realized with galvanically isolated inputs and outputs. The cameras have a large dynamic range and a 16-Bit analog digital converter.

We grant you two years warranty and customized system solutions with modified hardware and software. The PYROVIEW series made by DIAS Infrared is a unique infrared camera series that is optimally adjusted to your application.

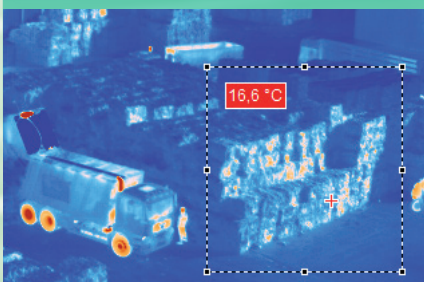
To minimize physically caused temperature measurement failures resulting from emissivity inaccuracies, you should measure at a short wavelength. There are typical spectral ranges, recommended temperature ranges and application in the overview:

Material	Temperature range	Spectral range	Device type
Non-metals	-20 °C to 500 °C	8 µm to 14 µm	„L“
Glass surfaces	300 °C to 700 °C	4.8 µm to 5.2 µm	„G“
Measurement through flames	600 °C to 1250 °C	about 3.9 µm	„F“
Ceramic, metals, graphite	200 °C to 500 °C	3.0 µm to 5.0 µm	„M“
Ceramic, metals, graphite	300 °C to 750 °C	1.4 µm to 1.6 µm	„S“
Metals, glass melts	600 °C to 3000 °C	0.8 µm to 1.1 µm	„N“



Application areas of our infrared cameras PYROVIEW:

- Process control and monitoring
- Fire detection systems (paper stocks, waste bunkers, cities, forests,...)
- Quality control in metal, glass and cement industry
- Measurements on semiconductors
- Traffic supervision
- Research and development



Space-saving but functional:
The compact+ housing for our PYROVIEW infrared cameras

camera series for industrial application

Camera type	Pixels	Spectral range	Temperature range ²	NETD ¹	FOV	Focus	Housing
PYROVIEW 380L	384 × 288	8 μm to 14 μm	−20 °C to 120 °C, 50 °C to 500 °C	< 0.04 K (30 °C, 50 Hz)	30° × 23°, optional: 90° × 66°, 60° × 47°, 44° × 34°, 22° × 16°, 15° × 12°, 8° × 6°, macro 30 μm	Motor focus	compact+ protection
PYROVIEW 640L	640 × 480	8 μm to 14 μm	−20 °C to 120 °C, 50 °C to 500 °C	< 0.04 K (30 °C, 50 Hz)	34° × 26°, optional: 90° × 74°, 67° × 52°, 25° × 19°, 12° × 9°, macro 30 μm	Motor focus	compact+ protection
PYROVIEW 640M	640 × 480	3 μm to 5 μm	200 °C to 500 °C	< 0.5 K (200 °C, 50 Hz)	25° × 19°, optional: 75° × 60°, 59° × 46°, 43° × 33°, 12° × 9°	Motor focus	compact+ protection
PYROVIEW 640G	640 × 480	4.8 μm to 5.2 μm	300 °C to 700 °C	< 1 K (400 °C, 50 Hz)	25° × 19°, optional: 75° × 60°, 59° × 46°, 43° × 33°, 12° × 9°	Motor focus	compact+ protection
PYROVIEW 640F	640 × 480	3.9 μm	600 °C to 1250 °C	< 1 K (600 °C, 50 Hz)	25° × 19°, optional: 75° × 60°, 59° × 46°, 43° × 33°, 12° × 9°	Motor focus	compact+ protection
PYROVIEW 512S	512 × 408	1.4 μm to 1.6 μm	300 °C to 750 °C	< 0.45 % of measured value in °C at 60 Hz	24° × 19°, optional: 54° × 44°, 37° × 29°, 12° × 10°	Motor focus	compact+ protection
PYROVIEW 512N	512 × 384	0.8 μm to 1.1 μm	600 °C to 1500 °C oder 1400 °C to 3000 °C	< 1 K (600 °C, 60 Hz) or 0.15 % of measured value in °	36° × 27°, optional: 51° × 40°, 26° × 19°, 19° × 14°, 13° × 9°, 9° × 7°	Motor focus	compact+ protection
PYROVIEW 768N	768 × 576	0.8 μm to 1.1 μm	600 °C to 1500 °C oder 1400 °C to 3000 °C	< 1 K (600 °C, 50 Hz) or 0.15 % of measured value in °	39° × 30°, optional: 22° × 16°, 58° × 45° borescope lens: 74° × 59° (PYROINC 768N)	Motor focus	compact+ protection
PYROVIEW 1600N	1600 x 1200	0.8 μm to 0.9 μm	650 °C to 900 °C, 750 °C to 1100 °C, 850 °C to 1300 °C, 900 °C to 1400 °C, 950 °C to 1500 °C oder 1100 °C to 1800 °C	< 2 K, 15 Hz, 700 °C < 3 K, 25 Hz, 800 °C < 3 K, 25 Hz, 950 °C < 4 K, 25 Hz, 1000 °C < 4 K, 25 Hz, 1100 °C < 4 K, 25 Hz, 1300 °C	33°×25°, optional 50°×39°, 18°×13°	Motor focus	compact+ protection
PYROVIEW 1920N	1920 x 1080	0.8 μm to 0.9 μm	650 °C to 900 °C, 750 °C to 1100 °C, 850 °C to 1300 °C, 900 °C to 1400 °C, 950 °C to 1500 °C oder 1100 °C to 1800 °C	< 2 K, 15 Hz, 700 °C < 3 K, 25 Hz, 800 °C < 3 K, 25 Hz, 950 °C < 4 K, 25 Hz, 1000 °C < 4 K, 25 Hz, 1100 °C < 4 K, 25 Hz, 1300 °C	39°×22°, optional 59°×35°, 21°×12°	Motor focus	compact+ protection

¹ Noise equivalent temperature range – specifications for black body radiator, ambient temperature 25 °C and specified image frequency. ² Others on request.

Housing variety

There are two housing variants for our fixed PYROVIEW infrared cameras available by default:



compact+

- Aluminium compact housing, with protection class IP54
- Dimensions 65 mm (L) × 160 mm (W) × 79 mm (H) (without lens and connectors)
- Operating temperature: −10 °C to 50 °C



protection

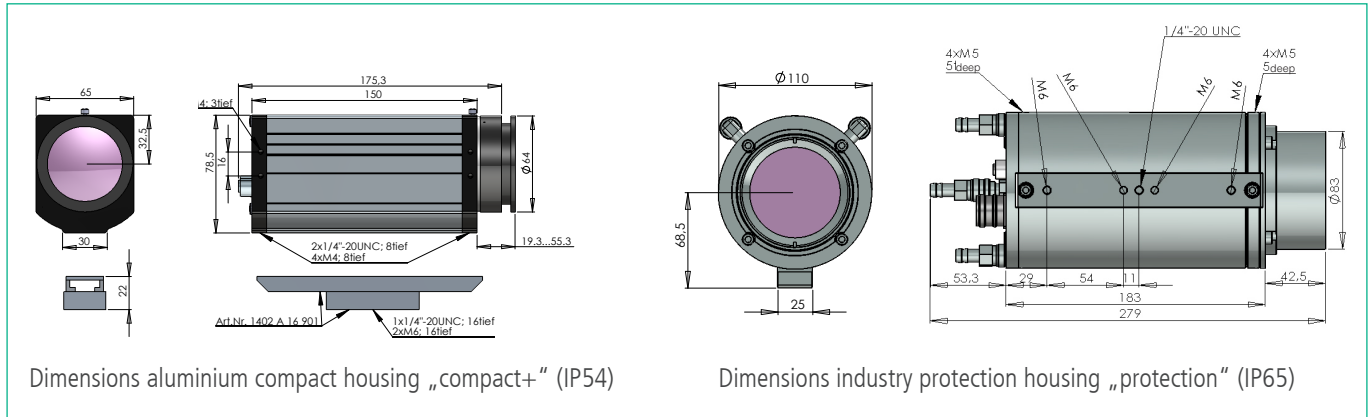
- Industry protection housing, with protection class IP65
- Stainless steel, with protection window, air purge unit and optional water cooling
- Diameter 110 mm, length 280 mm (without mechanical mounting and connectors)
- 6 bar max. water pressure, 2 bar max. air pressure
- Operating temperature: −25 °C to 150 °C (with water cooling)
−10 °C to 50 °C (without water cooling)

In order to protect the infrared cameras best possible there are no moving parts at the outside of the housing of "compact+" cameras with motor focus and all "protection" cameras. Special housings (weather protection housing, even with pan-tilt-unit, ATEX explosion protection housing) are available, too.

PYROVIEW

Dimensions, connectors and software

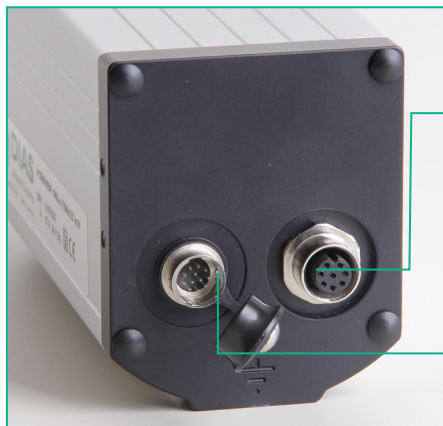
Dimensions



Dimensions aluminium compact housing „compact+“ (IP54)

Dimensions industry protection housing „protection“ (IP65)

Connectors (compact+ housing)³



Ethernet (LAN)		Customized terminal box (with power supply unit, alarm relay, controller, media converter,...)
<ul style="list-style-type: none"> Infrared real-time data up to maximum image frequency (TCP/UDP) Web interface (status and image bar) PYROSOFT software GigE Vision® compatible Configuration for stand-alone operation 		
<ul style="list-style-type: none"> ➔ Power supply ➔ Trigger 1 ➔ Trigger 2 	<ul style="list-style-type: none"> Error signal/ Alarm 1 ➔ Synch signal/ Alarm 2 ➔ 	
Inputs	Outputs	

³ Not valid for PYROVIEW 1600N and 1920N

Software

The powerful online software PYROSOFT for Windows® allows you to control the camera and record, view, manipulate and store the measured data.

Special features are:

- Real-time data recording
- Definition of zones and monitoring of alarm thresholds
- Analysis of trends
- Data export (Text, Bitmap, Video)
- Support of process interfaces (e.g. profibus, analog and digital inputs and outputs)

For system integration the PYROSOFT DAQ software is available with a programming interface (Windows®-DLL). The free software PYROSOFT Compact is delivered with every PYROVIEW infrared camera. For demanding application the versions PYROSOFT Professional and PYROSOFT Automation are available.

